

A decorative floral wreath composed of various flowers and green leaves. The flowers are primarily red and yellow, with some having a dotted or stippled texture. The leaves are a muted green color. The wreath is set against a light pink background with soft, wavy lines and a yellow sun-like shape in the upper right corner.

In the name of god

name: niloofar orli

Professor: Dr. Keifi

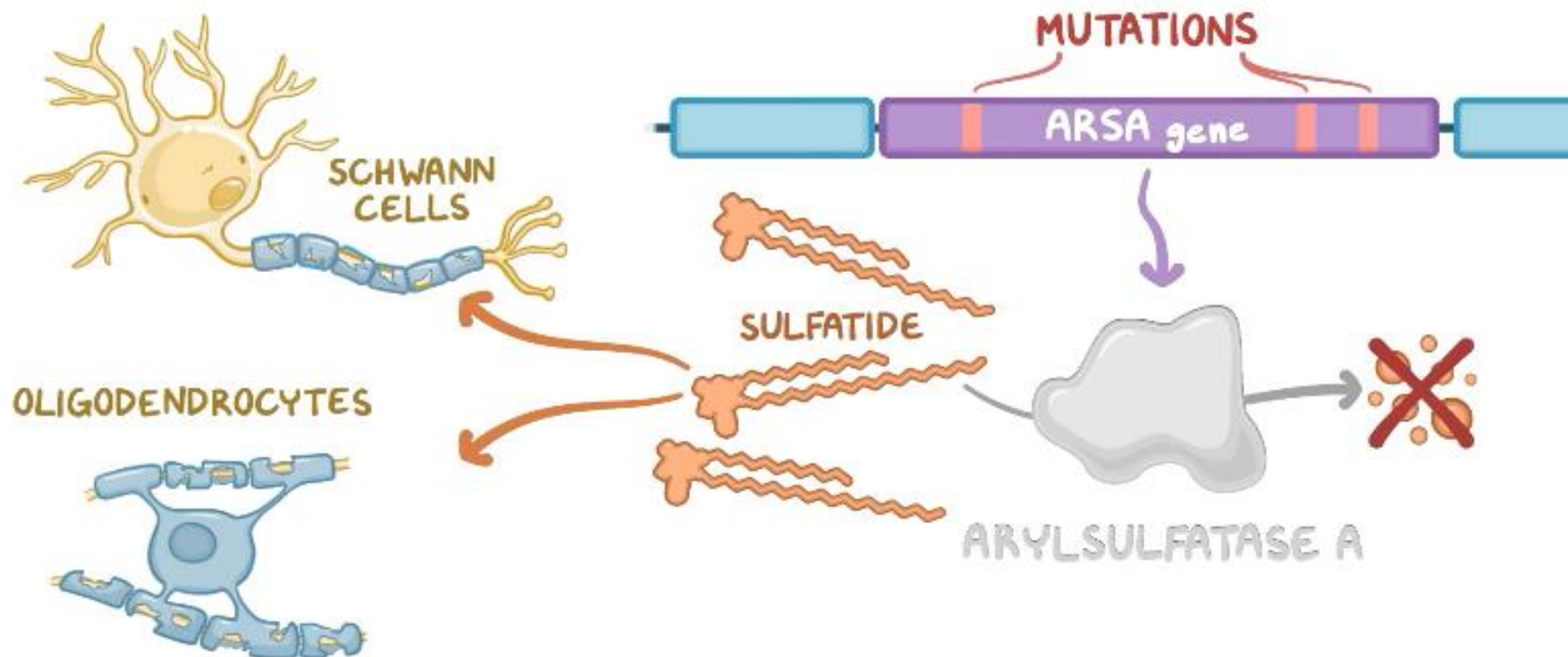


Metachromatic leukodystrophy

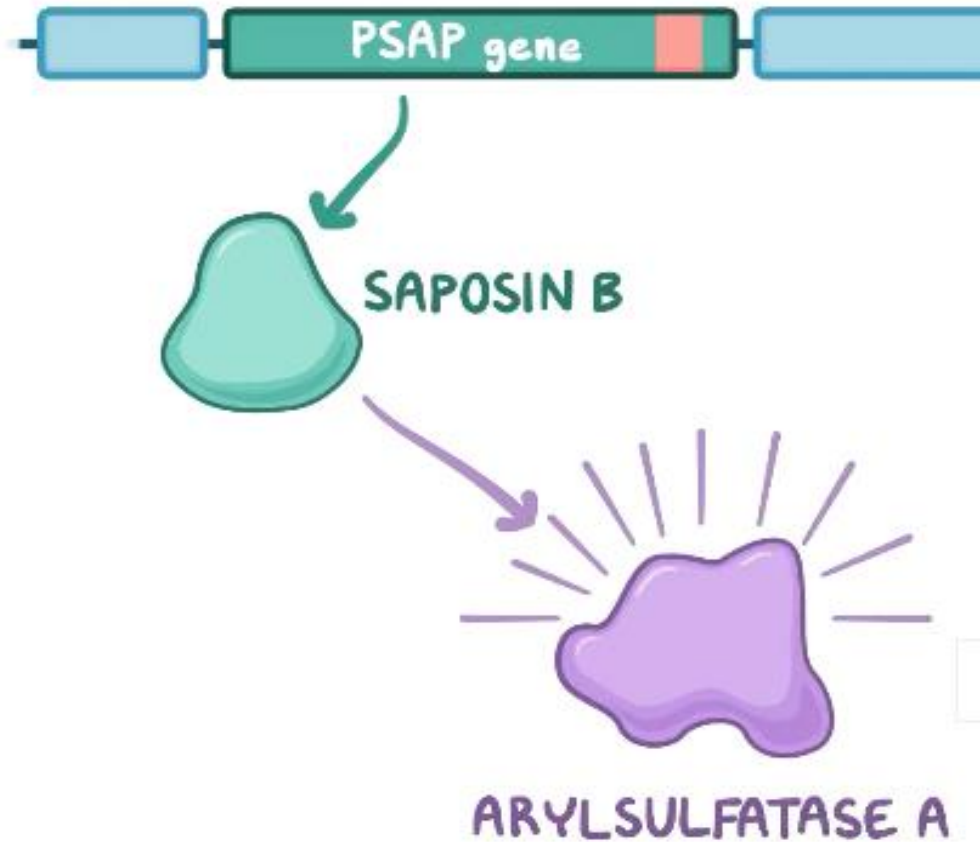
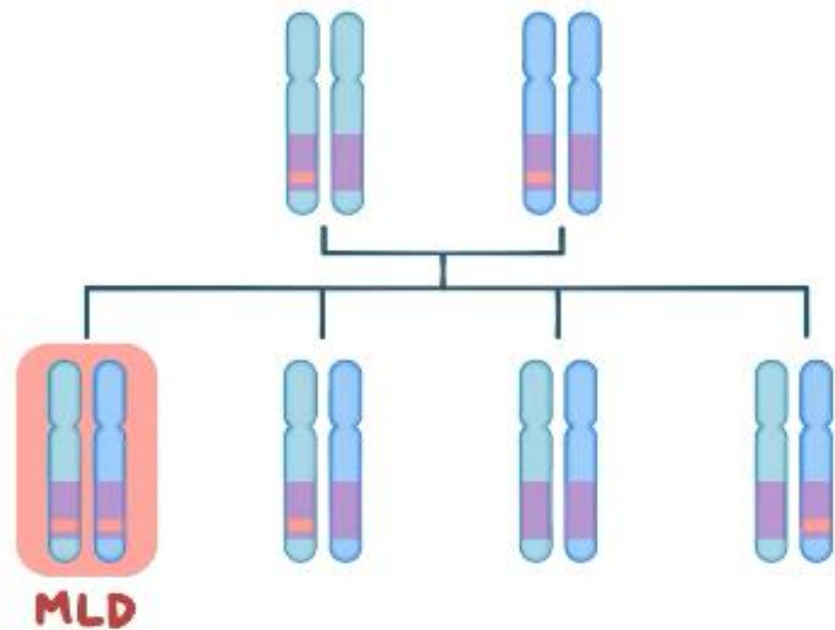


METACHROMATIC LEUKODYSTROPHY (MLD)

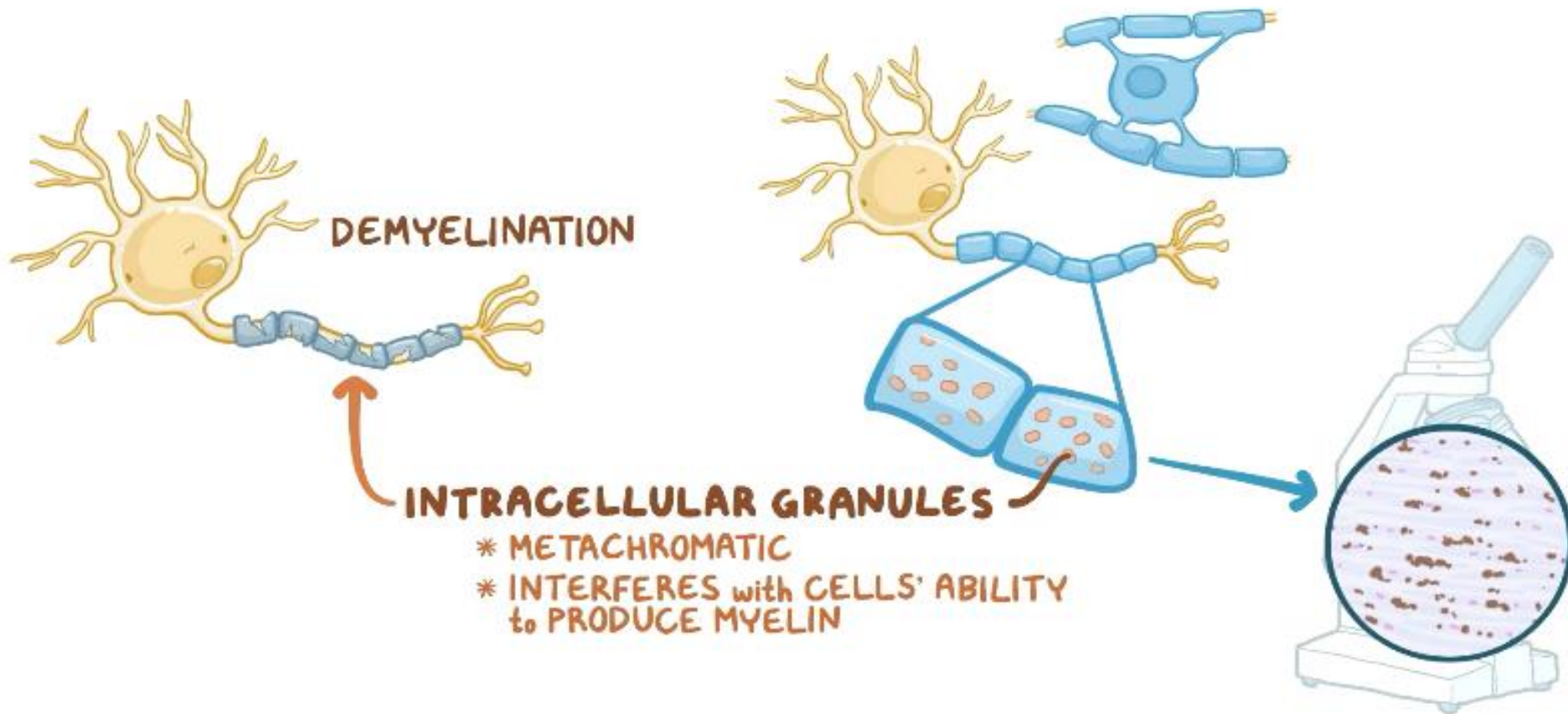
* RARE LYSOSOMAL STORAGE DISORDER



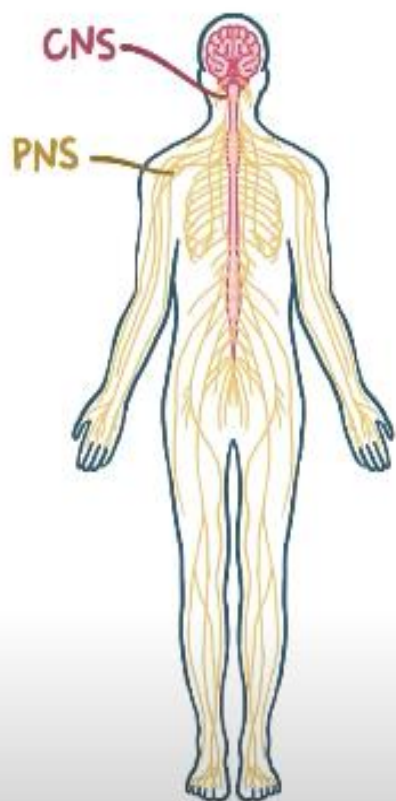
AUTOSOMAL RECESSIVE DISORDER



* CELLS CAN NOT RECYCLE SULFATIDES



SYMPTOMS



- ~ PERIPHERAL NEUROPATHY
- ~ ↓↓ DEEP TENDON REFLEXES
- ~ VISUAL DISTURBANCES
- ~ DIFFICULTY SPEAKING
- ~ DIFFICULTY WALKING
- ~ ATAXIA
- ~ BEHAVIOR & PERSONALITY CHANGES
- ~ SEIZURES



SYMPTOMS



LATE-INFANTILE (0-3)

- ~ IRRITABILITY
- ~ DEVELOPMENTAL DELAY



JUVENILE (4-ADOLESCENCE)

- ~ BEHAVIORAL CHANGES
- ~ ↓↓ ABILITY in SCHOOL



ADULT (16+)

- ~ MEMORY LOSS
- ~ PSYCHOSIS

- 
- ~ BLINDNESS
 - ~ PARALYSIS
 - ~ UNRESPONSIVENESS
 - ~ DEMENTIA
 - ~ PSYCHOSIS

DIAGNOSIS



BLOOD TEST

↳ ARYLSULFATASE A ENZYME
ACTIVITY in WBC

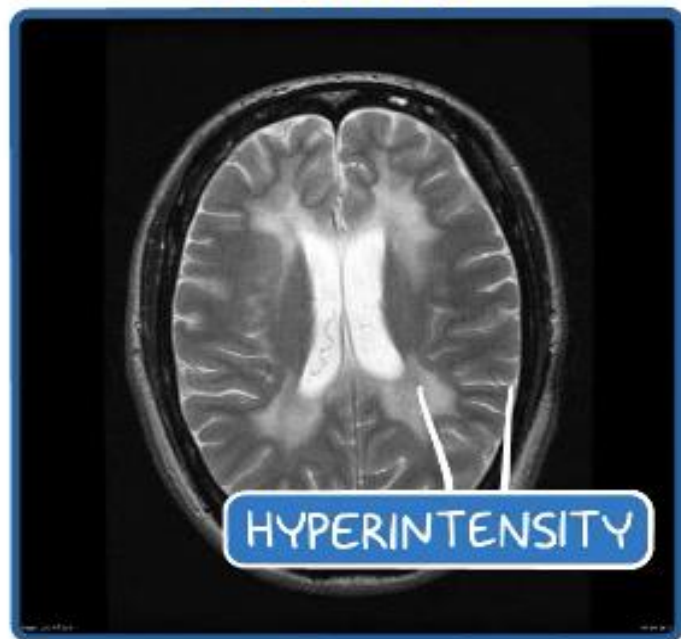


URINE SULFATIDE LEVELS

GENETIC TESTING



BRAIN MRI



TREATMENT



NEUROLOGISTS

* MANAGE SEIZURES *



GASTROENTEROLOGISTS

* MANAGE FEEDING *



**OCCUPATIONAL/PHYSICAL
THERAPISTS**

* ASSIST with DAILY *
LIVING & MOBILITY

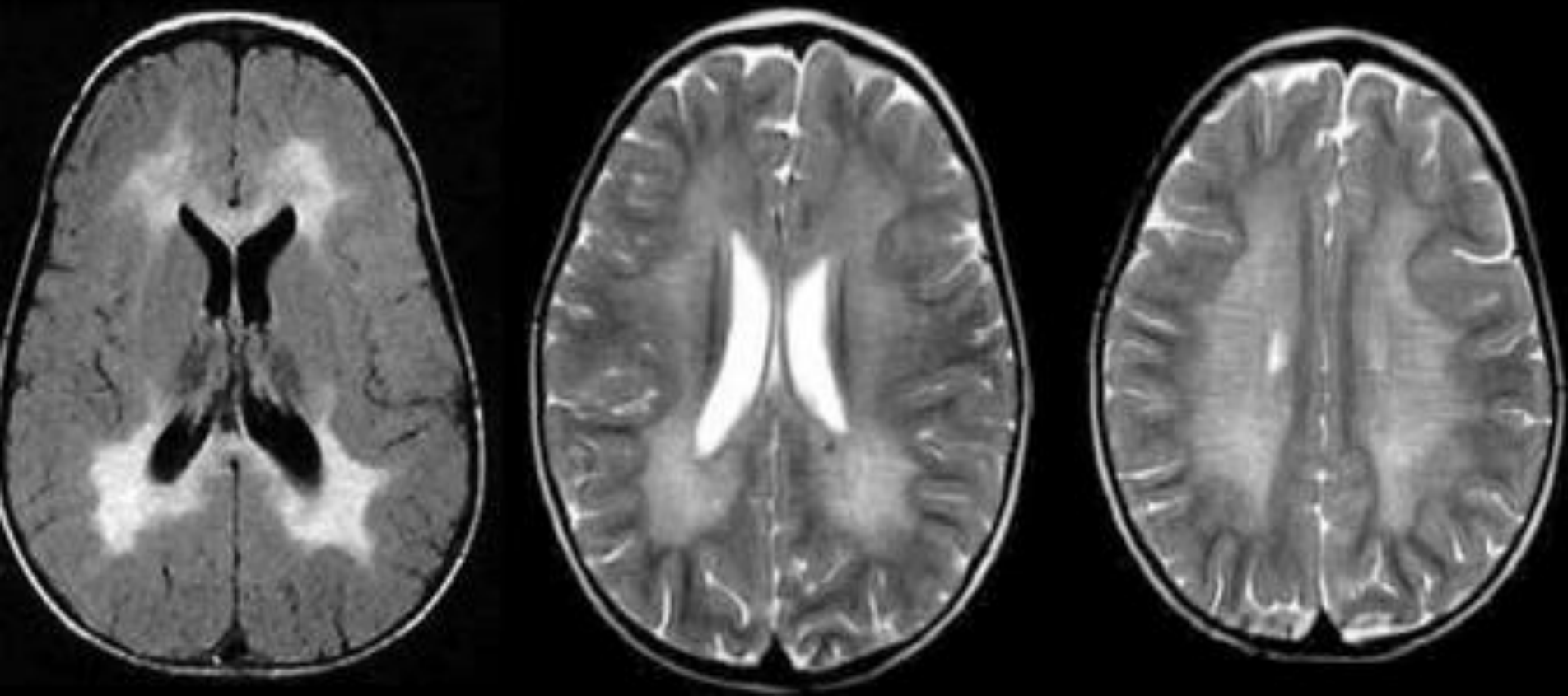
**ASYMPTOMATIC or MILDLY SYMPTOMATIC
MLD**

↳ HEMATOPOIETIC STEM CELL TRANSPLANTATION

↳ SLOW DOWN DISEASE PROGRESSION



Metachromatic leukodystrophy (MLD)



reference:

1.Asgct.org

2.Osmosis.org

3.Dr.G Behanu Prakash animated medicinal

4.www.mldfoundation.org

5.yourekascince.org